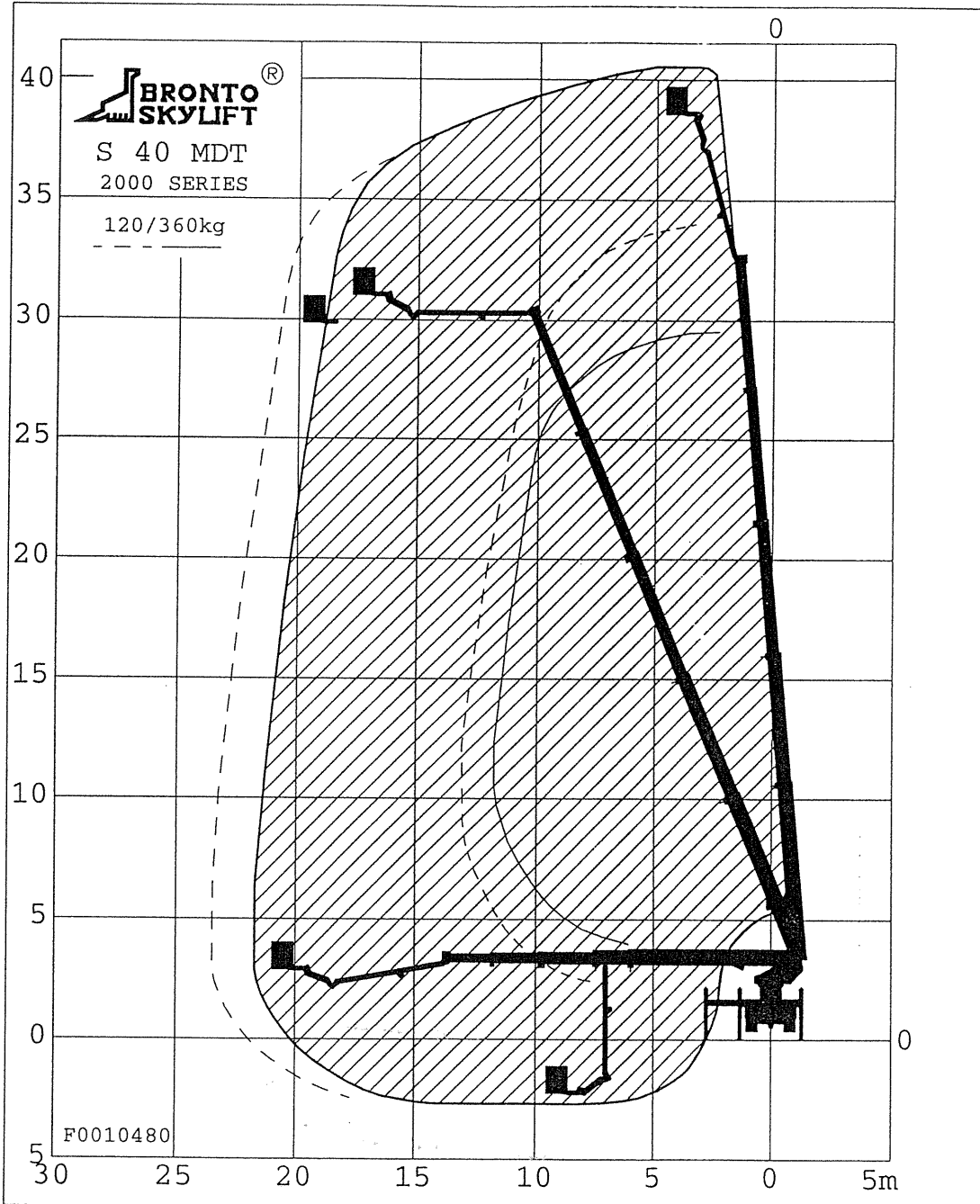


BRONTO SKYLIFT S 40 MDT 2000

ARBEITSBEREICHDIAGRAMM



TECHNICAL DATA

Safe working load	: 360 kg
Max. permitted wind speed	: 12.5 m/s
Typical GVW	: 17.5 ton
Outrigger width and lenght c/c	
- normal jacking	: 5.4/5.7 m
- narrow jacking	: 2.6/5.7 m
- one side jacking	: 4.0/5.7 m
Calculation code	: 1126